



MB HOLDING

Bolted steel tanks
Design - Production - Installation

OUR PRODUCTS

- *Firewater tanks*
- *Wastewater tanks*
- *Biomass storage tanks*
- *Rainwater tanks*
- *Land Based Aquaculture tanks*
- *Potable water tanks*
- *Flexible PVC tanks*
- *PVC liners and membranes*
- *Water pumps*



Management System
ISO 9001:2015

www.tuv.com
ID 9000021896

MB Holding LTD

Head office EUROPE, Latvia

Mobile phone: (+371) 29 95 97 87

Phone: (+371) 66 10 11 28

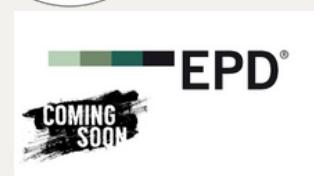
Email: mbholding@mbholding.lv

www.MBHOLDINGUSA.com



CERTIFICATION

EN 1090
ISO 3834



Bolted Steel tanks

This solution is leading the water storage industry for its extreme durability, flexibility in design and long life cycle that requires minimal maintenance.

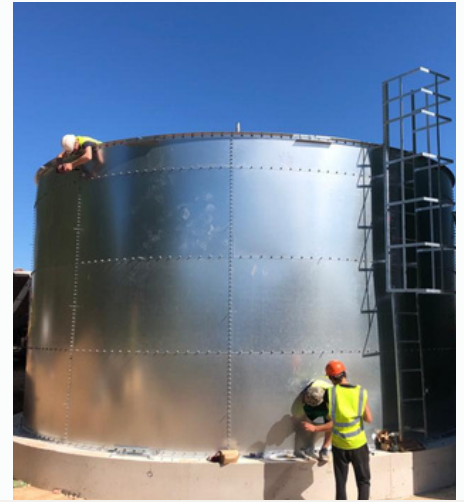


DURABILITY

*Bolted steel tanks are made from **individual sections** that are formed, and finished at a **controlled manufacturing facility**, using high-quality carbon, galvanized or stainless steel that meets applicable US and EU standard requirements.*

QUICK TO ASSEMBLE AND COST EFFECTIVE SHIPPING

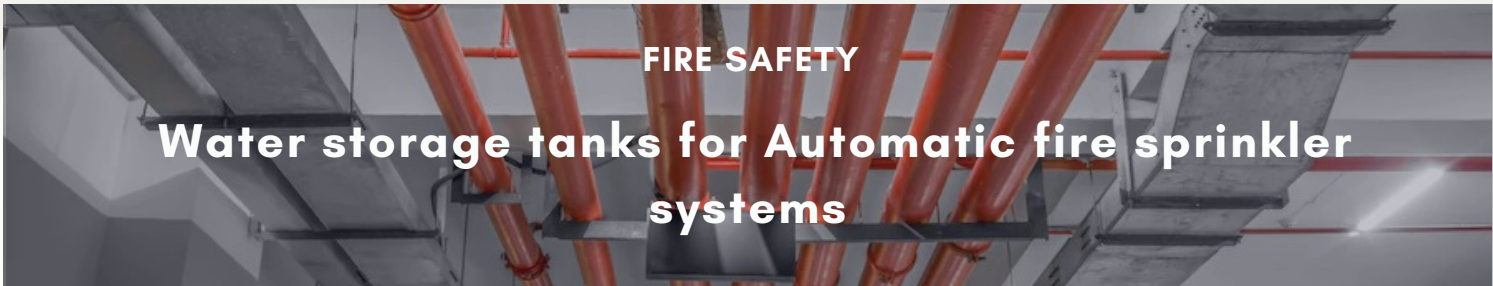
*With bolted steel tanks, **all of the manufacturing is done off-site**. Once the components arrive at the installation site, the **assembly process is quick and efficient**, requiring a minimal amount of time and fewer labour costs. The process can be completed in nearly any type of weather, reducing delays, and it allows the tank to be used almost immediately after completion, minimizing downtime.*



AVAILABLE IN MANY SIZES AND APPROPRIATE COATINGS



Bolted steel tanks can be used to store many types of materials. They can be **custom designed** to fit your particular application, **with varying widths, heights and other characteristics**. In areas where space is limited, the tanks can be made tall and narrow for a smaller footprint, or they can be made wider where vertical space is constrained. The **design options are practically limitless** and can allow for great flexibility in demanding applications.



Design according the guidelines



One of the basic essentials needed to control and extinguish a structure fire is **adequate water supply**. Fire flow is the amount of water available for fire-fighting purposes. Designing the water supply for new buildings is an important part of the initial planning for new development projects. The storage capacity is to be based on the area of the premises or facility to be provided with fire protection and the facilities requiring special fire protection.



Concrete and field-welded steel tanks require frequent maintenance and can be difficult to repair if they become damaged, requiring special equipment and personnel with the appropriate welding or concrete experience. **Bolted steel tanks require minimal maintenance**, because of their durable finish and reliable gaskets and hardware. Because they are made from individual sections, repairs are relatively easy. If a section begins leaking, hardware deteriorates, a gasket fails or an accessory malfunctions, the affected section can be disassembled and replaced, without cutting, welding or labour-intensive concrete work. This **minimizes labour and maintenance costs** and leads to a storage solution with a far longer life cycle.



Our storage solutions are adaptable for RAS technology optimal coatings so water can be recycled and reused after mechanical and biological filtration and removal of suspended matter and metabolites.

Quickly and easily erected to a wide range of sizes depending on the scale of operation and answers to all storage challenges.

Producing what is believed to be the most project-oriented solution and are designed to meet the demands of corrosive and demanding environments.

FLEXIBLE PVC TANKS



WATER PUMPS



PARTS & ACCESSORIES FOR STORAGE TANKS

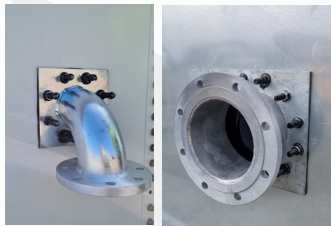
When new or replacement tank parts are needed, MB HOLDING can custom design and fabricate any part to fit the needs of your tank and project.



Automatic water level controller is designed to monitor the level of water in a tank. It displays the level of water and when it is at the lowest level; a pump is activated automatically to refill the tank. When the tank is filled to its maximum capacity, the pump is automatically de-energized.



MB Holding is producing **PVC liners, membranes** for drinking water and other fluid storage. Each membrane is produced on order, by precise dimension and specification. All the membranes can be used for tank refurbishment, for existing concrete or steel tanks.



Flanges and Connections
We equip tanks with inlet, outlet, overflow & drain connections. They are adapted for each project specification.



Pressure gauge

Here are various types of pressure gauges. Installed so that you can see the amount of water in the tank. The most commonly used is the hydrostatic pressure gauges, which have proven themselves with accuracy.



Anti-Vortex plate is installed in the suction line of fire pumps to control the turbulence in a flowing water. They are simple in design and very effective.

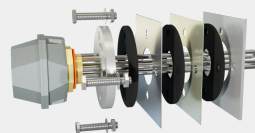


Sidewall manways

Are designed in accordance with the needs of project. They are manufactured with hot-dip galvanized or stainless steel and epoxy coating.



Ladders, platforms and walkways. All is produced from hot-dip galvanized steel, aluminum, stainless steel or composite material.



Industrial Immersion Heater

- High impact cast aluminium heavy duty terminal box in epoxy powder finish
- Certified weatherproof to IP 55
- Two conduit entries (standard 1x 25mm)
- Heavy duty brass heads crewed 2 "or 2 1/4" BSP
- Suitable for working pressures of 36 psi (2.5 bar)



Hydraulic Jacks. They are equipped with all necessary couplings, valves, hydraulic oil etc. Ready for use!



Liquid Level Indicator. This simple and reliable float and tape-based product has been used for managing inventory in the water industry for more than 80 years.

MB Holding LTD |

Head office EUROPE, Latvia | Mobile phone: (+371) 29 95 97 87 | Phone: (+371) 66 10 11 28

Email: mbholding@mbholding.lv

www.mbholdingusa.com